

## FOCUS IN: A CLOSE LOOK AT THE ART OF DAVID DRISKELL

DIRECTIONS: Study the whole painting independently. Then, look closely at a section of the painting in small groups.

### PART 1

Study the painting below for 1 minute. Jot down at least 5 things you noticed about the painting.



David C. Driskell, *Memories of a Distant Past*, 1975, Egg tempera, gouache, and collage on paper, 21 1/2 x 16 in., Collection of Joseph and Lynne Horning, Washington, DC © Estate of David C. Driskell, courtesy DC Moore Gallery, New York

1.
2.
3.
4.
5.

## FOCUS IN: A CLOSE LOOK AT THE ART OF DAVID DRISKELL

### PART 2

In your group, look closely at the section of the painting your group is assigned and answer the questions that follow.

### GROUP 1



QUESTION	RESPONSE
What stands out to you in this section of the artwork?	
What does this section of the painting make you wonder?	
What did you notice in the closer look that you did not notice before?	

FOCUS IN: A CLOSE LOOK AT THE ART OF DAVID DRISKELL

GROUP 2



QUESTION	RESPONSE
What stands out to you in this section of the artwork?	
What does this section of the painting make you wonder?	
What did you notice in the closer look that you did not notice before?	

FOCUS IN: A CLOSE LOOK AT THE ART OF DAVID DRISKELL

GROUP 3



QUESTION	RESPONSE
What stands out to you in this section of the artwork?	
What does this section of the painting make you wonder?	
What did you notice in the closer look that you did not notice before?	

FOCUS IN: A CLOSE LOOK AT THE ART OF DAVID DRISKELL

GROUP 4



QUESTION	RESPONSE
What stands out to you in this section of the artwork?	
What does this section of the painting make you wonder?	
What did you notice in the closer look that you did not notice before?	

FOCUS IN: A CLOSE LOOK AT THE ART OF DAVID DRISKELL

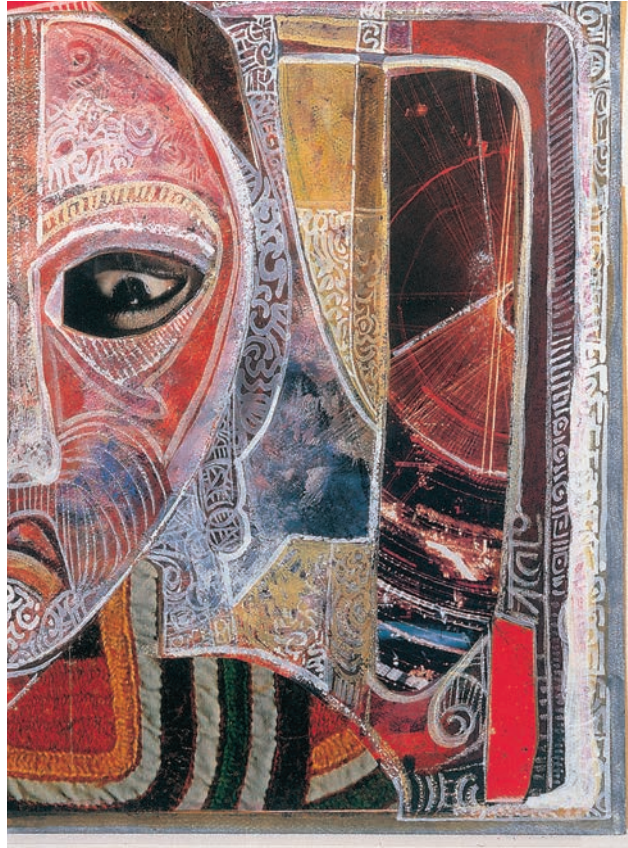
GROUP 5



QUESTION	RESPONSE
What stands out to you in this section of the artwork?	
What does this section of the painting make you wonder?	
What did you notice in the closer look that you did not notice before?	

## FOCUS IN: A CLOSE LOOK AT THE ART OF DAVID DRISKELL

### GROUP 6



QUESTION	RESPONSE
What stands out to you in this section of the artwork?	
What does this section of the painting make you wonder?	
What did you notice in the closer look that you did not notice before?	