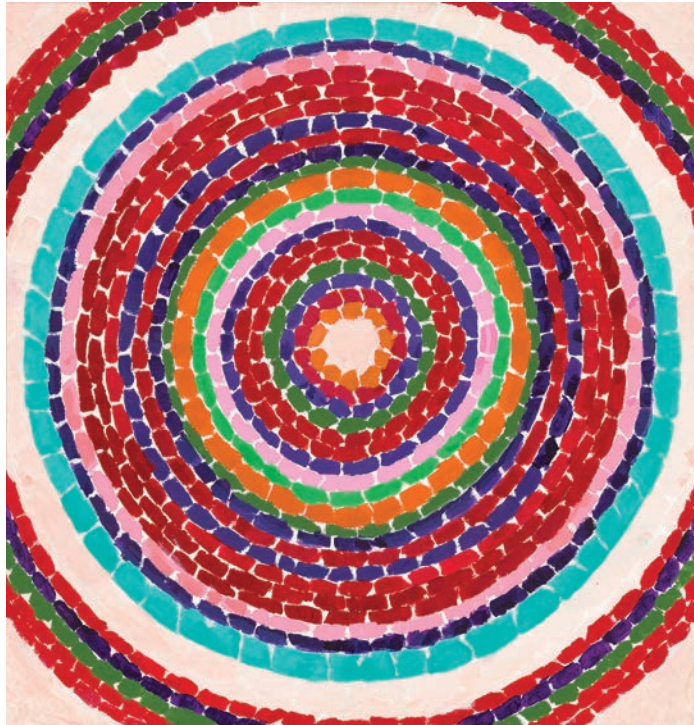


I SPY, WITH MY LITTLE EYE: NATURE!

DIRECTIONS: What do you see when you look at each painting? What objects from nature do you think Alma Thomas was inspired by? What do YOU spy with your little eye? Use the questions to help you carefully look at each painting.



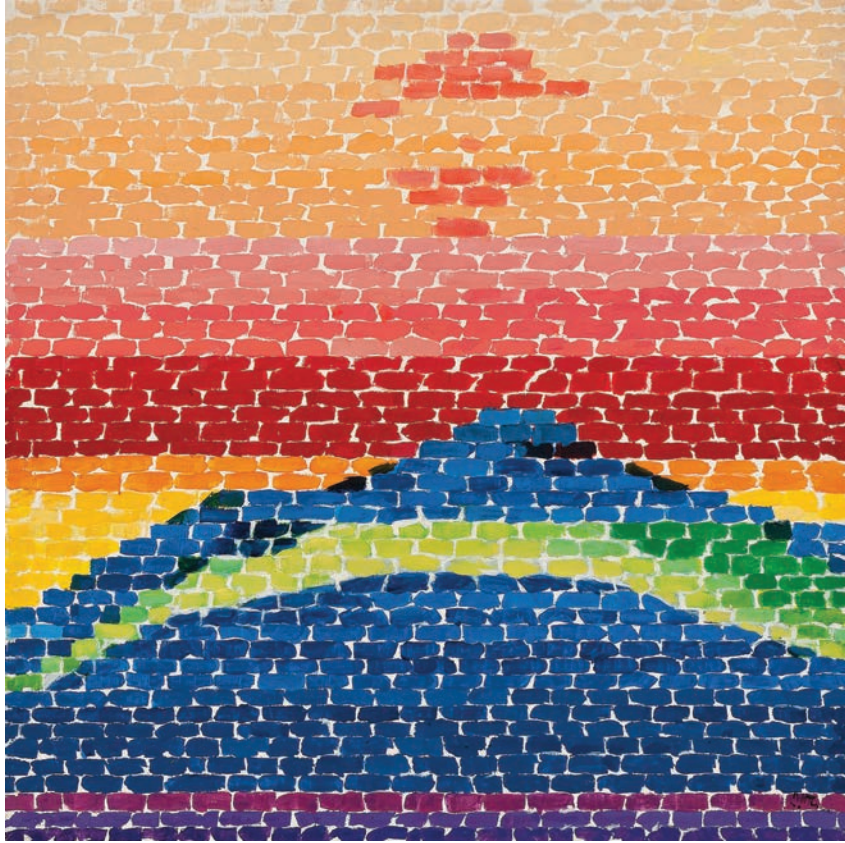
How do you feel looking at this painting?

What colors do you notice?

What do those colors remind you of in nature?

What do you think inspired Alma Thomas to make the painting?

I SPY, WITH MY LITTLE EYE: NATURE!



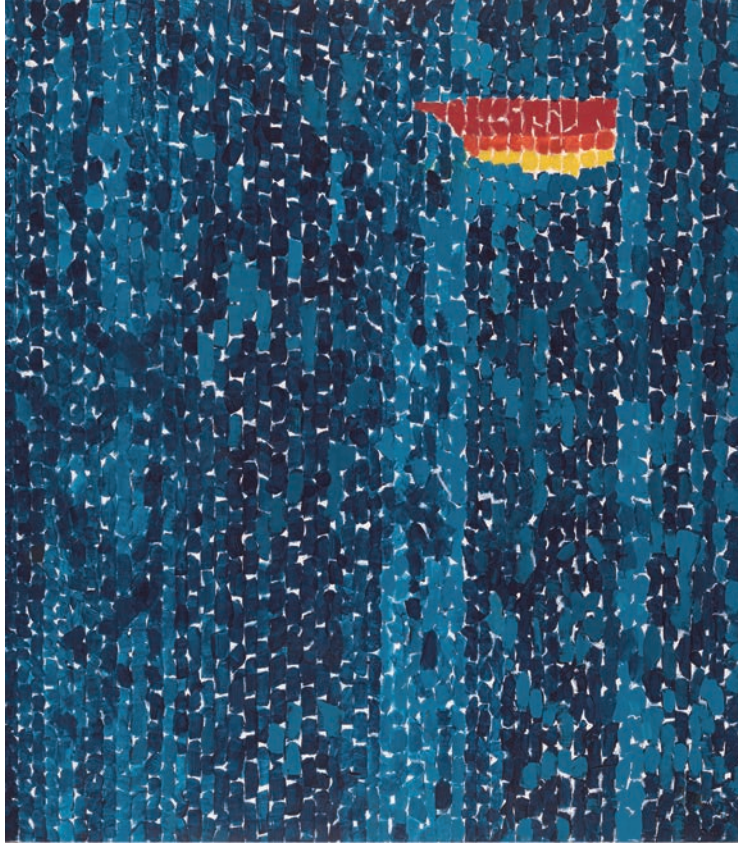
How do you feel looking at this painting?

What colors do you notice?

What do those colors remind you of in nature?

What do you think inspired Alma Thomas to make the painting?

I SPY, WITH MY LITTLE EYE: NATURE!



How do you feel looking at this painting?

What colors do you notice?

What do those colors remind you of in nature?

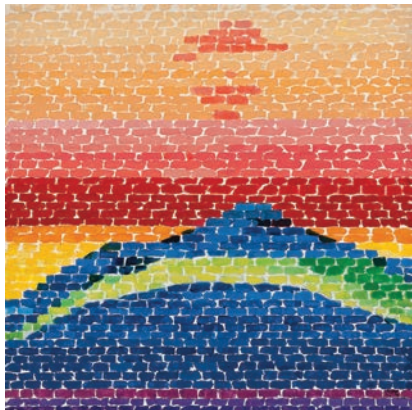
What do you think inspired Alma Thomas to make the painting?

I SPY, WITH MY LITTLE EYE: NATURE!

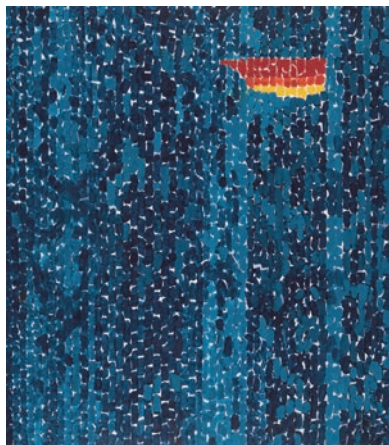
Now look at the artworks with their titles. How do the titles help you understand more about what inspired Alma Thomas?



Alma W. Thomas, *Pansies in Washington*, 1969, Acrylic on canvas, 50 x 48 in., National Gallery of Art, 2015, Corcoran Collection, Gift of Vincent Melzac



Alma W. Thomas, *Apollo 12 Splash Down*, 1970, Acrylic and graphite on canvas, 50 ¼ x 50 ¼ in., Courtesy of Michael Rosenfeld Gallery LLC, New York City



Alma W. Thomas, *Starry Night and the Astronauts*, 1972, Acrylic on canvas, 60 x 53 in., Art Institute of Chicago, Restricted gift of Mary P. Hines in memory of her mother, Frances W. Pick