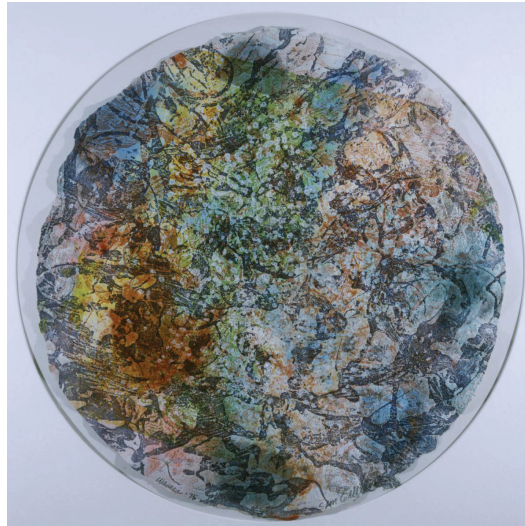


EXPRESSIONISM ART DETECTIVE

DIRECTIONS: Study each of the paintings. Then, answer the questions that follow.



Romare Bearden, *Old Poem*, 1960, Oil on linen, Private collection © 2021 Romare Bearden Foundation / Licensed by VAGA at Artists Rights Society (ARS), NY



Sam Gilliam, *Wausau*, 1975, Color embossed collagraph with embedded shards on paper, Tondo diameter: 21 3/4 in., Acquired 1978



Joan Mitchell, *August, Rue Daguerre*, 1957, Oil on canvas, 82 x 69 in., Acquired 1958; © Estate of Joan Mitchell

EXPRESSIONISM ART DETECTIVE

QUESTION	NOTES
What do you notice about how the artists used lines in these paintings?	
What do you notice about how the artists used color in these paintings?	
What do you notice about how the artists created movement in these paintings?	
What do you notice about how the artists used shapes in these paintings?	
Based on these paintings, what do you think are some characteristics of expressionist art?	