

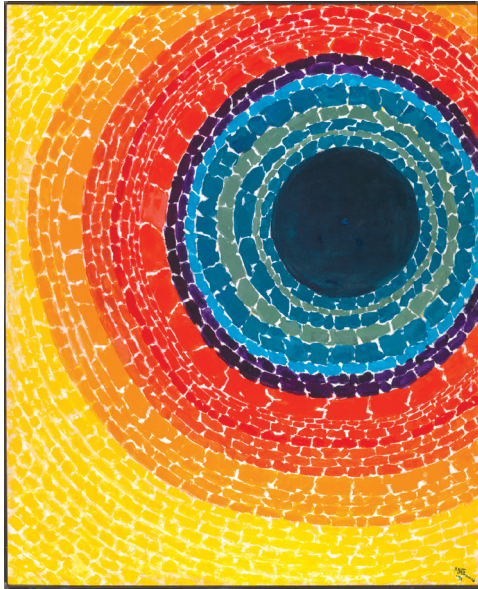
## FINDING BEAUTY IN THE WORLD: THE ART OF ALMA THOMAS GUIDESHEET

NAME \_\_\_\_\_

DIRECTIONS: In your small group, study each painting by Alma Thomas and answer the questions that follow.

| ARTWORK   | What colors do you see? | What shapes and patterns do you see? | How do you feel when you look at this painting? | What thing in nature does this remind you of? | In your opinion, what makes this painting beautiful? |
|---|-------------------------|--------------------------------------|---|---|--|
|    |                         |                                      |   |   |  |
|   |                         |                                      |   |   |  |
|  |                         |                                      |   |   |  |

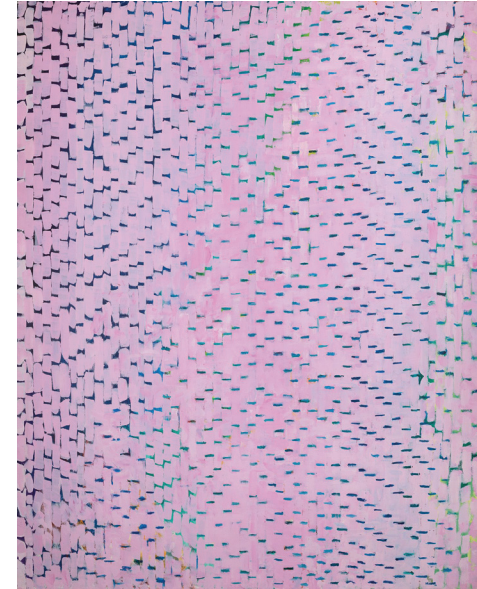
## FINDING BEAUTY IN THE WORLD: THE ART OF ALMA THOMAS GUIDESHEET



Alma Thomas, *The Eclipse*, 1970, Acrylic on canvas, 62 x 49 3/4 in., Smithsonian American Art Museum



Alma Thomas, *Grassy Melodic Chant*, 1976, Acrylic on canvas, 46 x 36 in., Smithsonian American Art Museum



Alma Thomas, *Cherry Blossom Symphony*, 1973, Acrylic on canvas, 69 x 54 in., Collection halley k harrisburg and Michael Rosenfeld, New York, NY