

## PORTRAIT DEEP DIVE

Directions: Examine each set of portraits by Jacob Lawrence and Kehinde Wiley. Then answer the questions that follow.

### PORTRAITS BY JACOB LAWRENCE



Jacob Lawrence, *Self-Portrait*, 1977

Gouache and tempera on paper, 23 x 31 in.  
National Academy of Design, New York  
© Gwendolyn Knight Lawrence, courtesy of the  
Jacob and Gwendolyn Lawrence Foundation



Jacob Lawrence, *Frederick Douglass, Panel no. 21*, 1939

Casein tempera on hardboard, 17 7/8 x  
12 in. Hampton University Museum,  
Virginia © 2015 Jacob and Gwendolyn  
Knight Lawrence Foundation, Seattle/  
Artists Rights Society (ARS), New York



Jacob Lawrence, *The Shoemaker*, 1945

Watercolor and gouache on paper, 22 3/4 in. x 31 in.  
The Metropolitan Museum of Art, New York © 2020  
The Jacob and Gwendolyn Lawrence Foundation,  
Seattle / Artists Rights Society (ARS), New York

### PORTRAITS BY KEHINDE WILEY



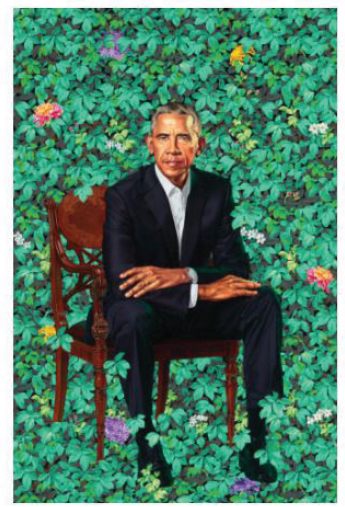
Kehinde Wiley, *Ice-T*, 2005

Oil on canvas, 96 x 72 in. Private collection,  
Courtesy of Rhona Hoffman Gallery  
© Kehinde Wiley



Kehinde Wiley, *LL Cool J*, 2005

Oil on canvas, 96 x 72 in.  
Courtesy of LL Cool J © Kehinde Wiley



Kehinde Wiley, *Barack Obama*, 2018

Oil on canvas, 84 1/8 x 57 7/8 in. National  
Portrait Gallery, Smithsonian Institution  
© Kehinde Wiley

Discuss and jot down your thoughts about the following questions:

QUESTION	NOTES
<p><b>PORTRAITS</b> Looking at Lawrence’s portraits specifically, what is similar about them? What is different?</p>	
<p><b>PORTRAITS</b> Looking at Wiley’s portraits specifically, how is the Obama portrait different from the other two? Are the messages the same or different? How can you tell?</p>	
<p><b>STYLE</b> What is <i>similar</i> about the style of and approach to Lawrence and Wiley’s portraits?</p>	
<p><b>STYLE</b> What is <i>different</i> about the style of and approach to Lawrence and Wiley’s portraits?</p>	

QUESTION	NOTES
<p><b>THEMES</b>            What is <i>similar</i> about the themes in the portraits?            What messages do you think the artists are conveying through the portraits?</p>	
<p><b>THEMES</b>            What is <i>different</i> about the themes in the portraits?            What messages are unique to each artist, as conveyed through their portraits?</p>	
<p><b>THEMES</b>            In what ways do Lawrence’s portraits break stereotypes?</p>	
<p><b>THEMES</b>            In what ways do Wiley’s portraits break stereotypes?</p>	

QUESTION	NOTES
<p><b>STORIES</b>            What is <i>similar</i> about the stories each artist conveys about the subjects in their portraits?</p>	
<p><b>STORIES</b>            What is <i>different</i> about the stories each artist conveys about the subjects in their portraits?</p>	
<p><b>STORIES</b>            How do Lawrence's portraits tell a story different from what you may know about the people depicted?</p>	
<p><b>STORIES</b>            How do Wiley's portraits tell a story different from what you may know about the people depicted?</p>	